

Sintronic Integrated PGS FAQ

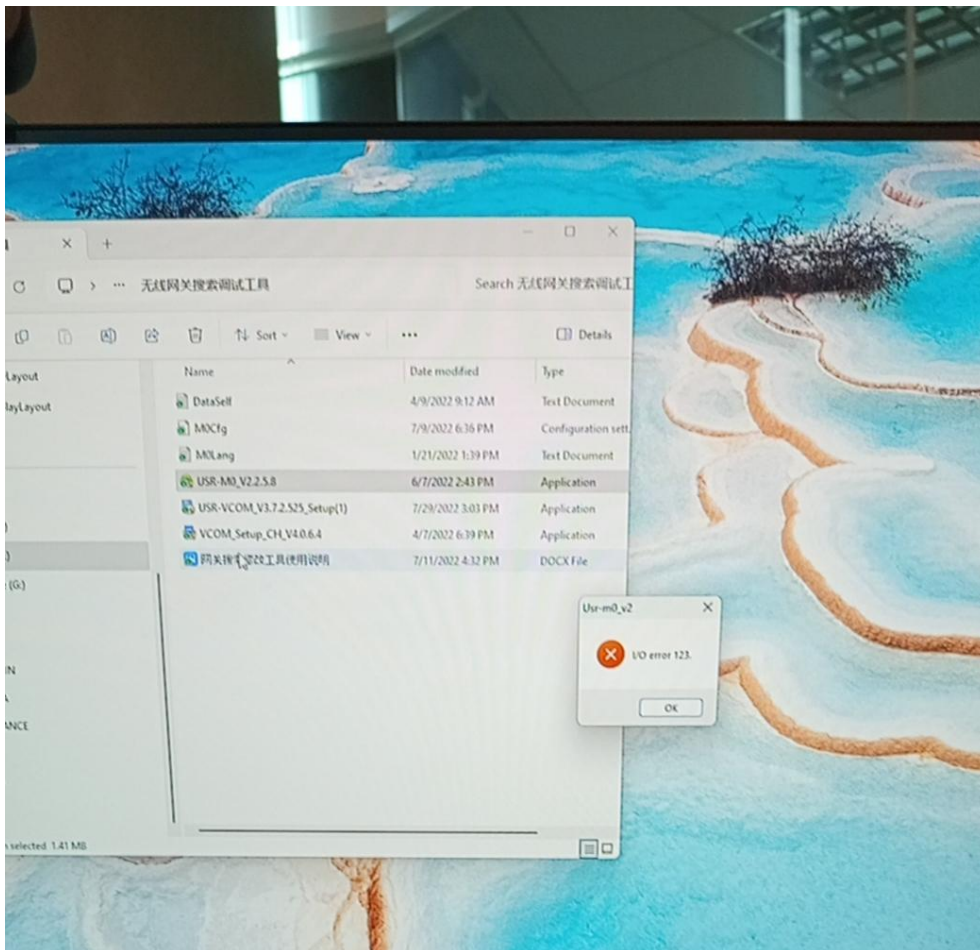
1. Why center controller ip address tool USR-MO have error in english system pc

Answer:it is lacking of windows running base.

Please download and install and restart pc

Click->[Download](#)

 USR-MO_V2.2.5.8.exe	2022/6/7 14:43	应用
 USR-VCOM_V3.7.2.525_Setup(1).exe	2022/7/29 15:03	应用
 VCOM_Setup_CH_V4.0.6.4.exe	2022/4/7 18:39	应用
 网关搜索修改工具使用说明.docx	2022/7/11 16:32	DO



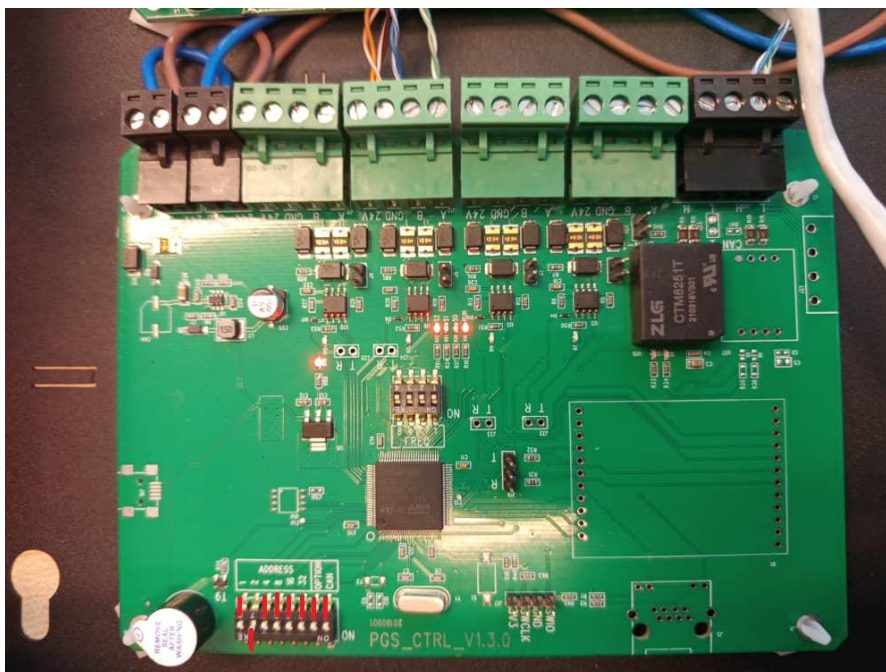
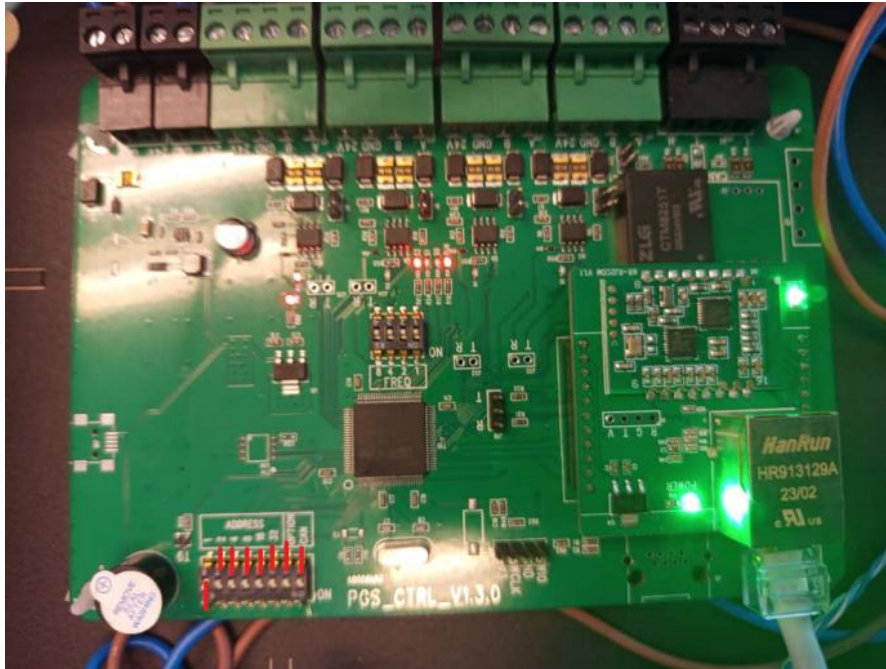
2. USR-MO 6.3 Version

Please click->[download](#)

3. Two important things must be done before use sintronic integrated pgs

① Set the center controller physical address to 1 and area controller can from 2-63

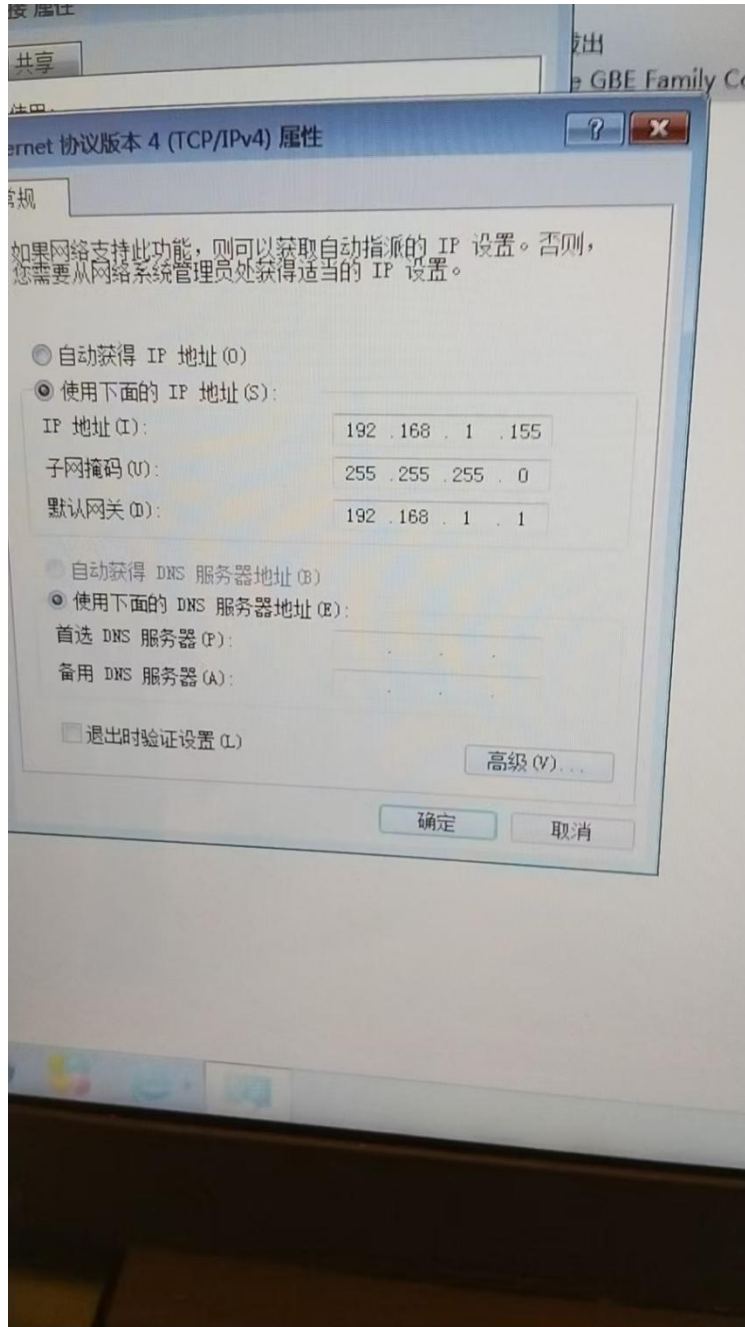
After setting the button code please reboot the device otherwise the controller can not be found



② Set the pc ip address and the center controller ip address in the same lan

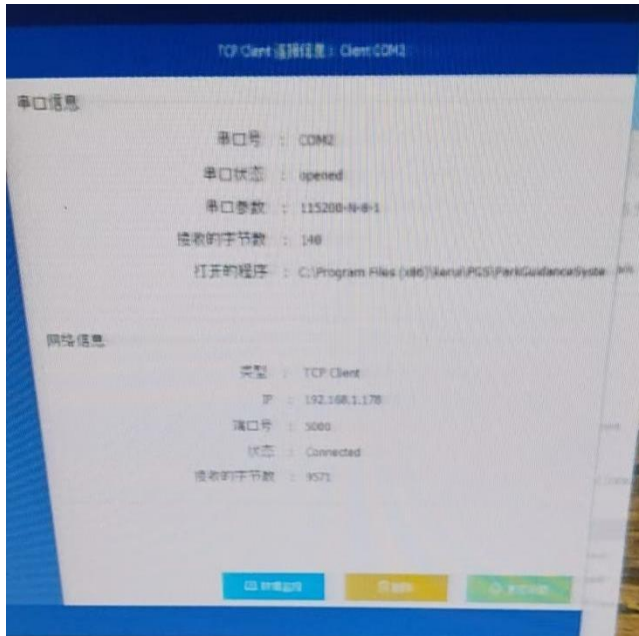
For example center controller ip address is 192.168.1.178

The pc ip address can set as below



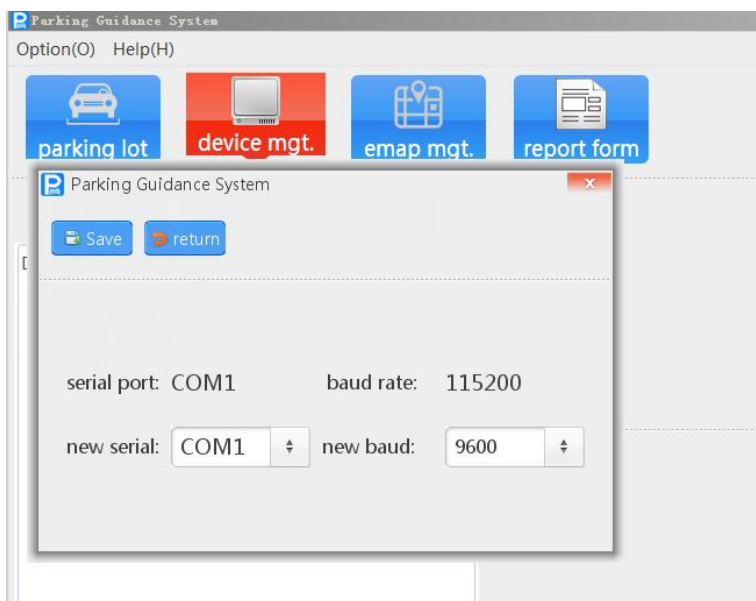
4. How to make sure the system running stably

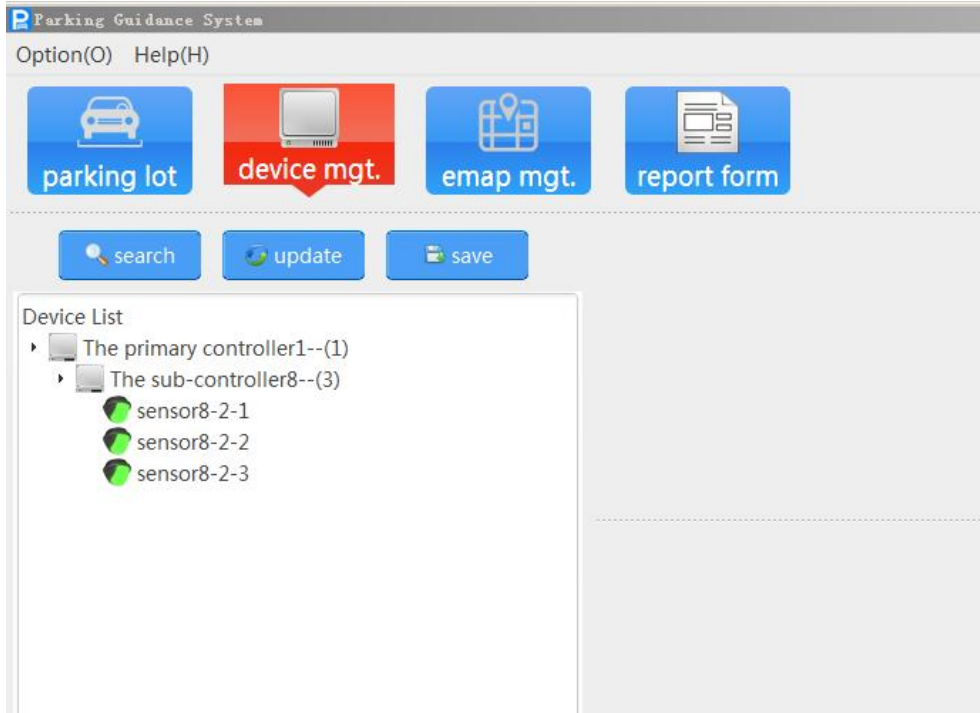
1. keep the exist com port online with pgs software
2. Close pgs tool after use it for finishing debugging since pgs tool and pgs software can not online in the same time otherwise there will be com port conflict and pgs software find data error



5. How to search device in pgs software

- ① Click the software and enter with account admin and password 123456
Click Option-Serial Port setting and choose the built com port with baud rate 115200
Click search device





The screenshot shows the 'Parking Guidance System' software interface. At the top, there is a menu bar with 'Option(O)' and 'Help(H)'. Below the menu bar are four main navigation buttons: 'parking lot' (blue with a car icon), 'device mgt.' (red with a server icon), 'emap mgt.' (blue with a map icon), and 'report form' (blue with a document icon). Below these buttons are three smaller buttons: 'search' (blue with a magnifying glass icon), 'update' (blue with a refresh icon), and 'save' (blue with a floppy disk icon). The main content area is titled 'Device List' and contains a tree view structure:

- The primary controller1--(1)
 - The sub-controller8--(3)
 - sensor8-2-1
 - sensor8-2-2
 - sensor8-2-3