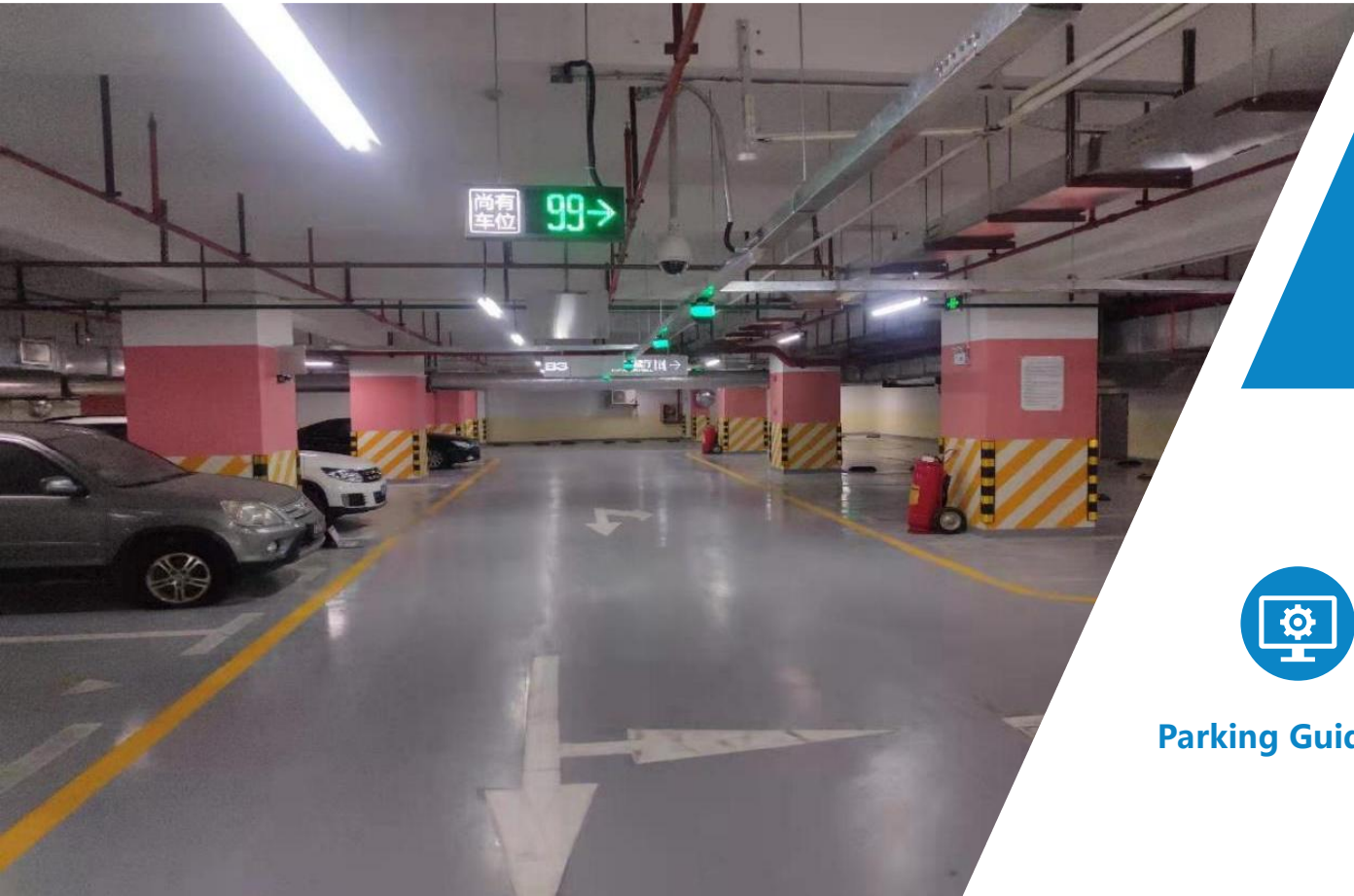


Video Parking Guidance & Car Searching System



All rights reserved by shenzhen sintronic technology company limited

01 Video Parking Guidance System



With license plate recognition on the camera sensor, the video parking guidance system can realize parking guidance and car searching both function.



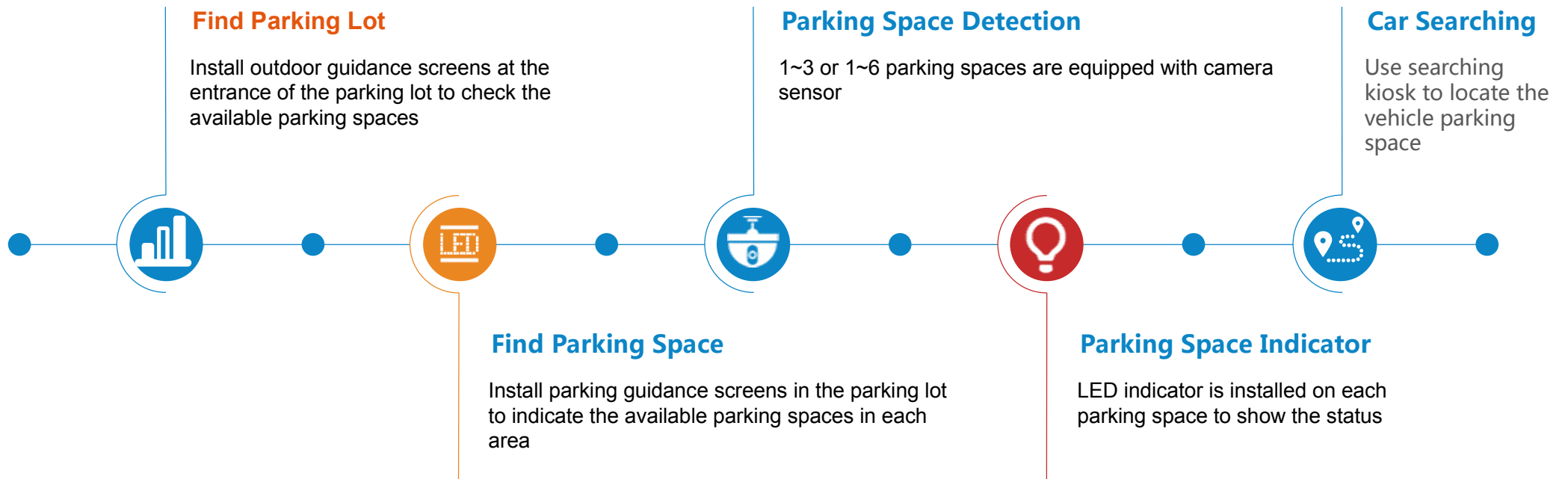
Parking Guidance



Available Parking Space



Car Searching



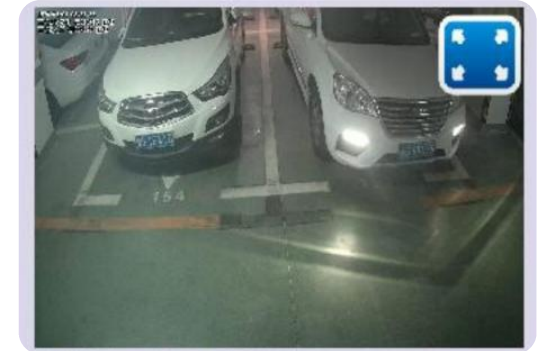
02 Application scenario



Entrance Guidance Screen



Indoor Guidance Screen



LPR Detection



Video Guidance

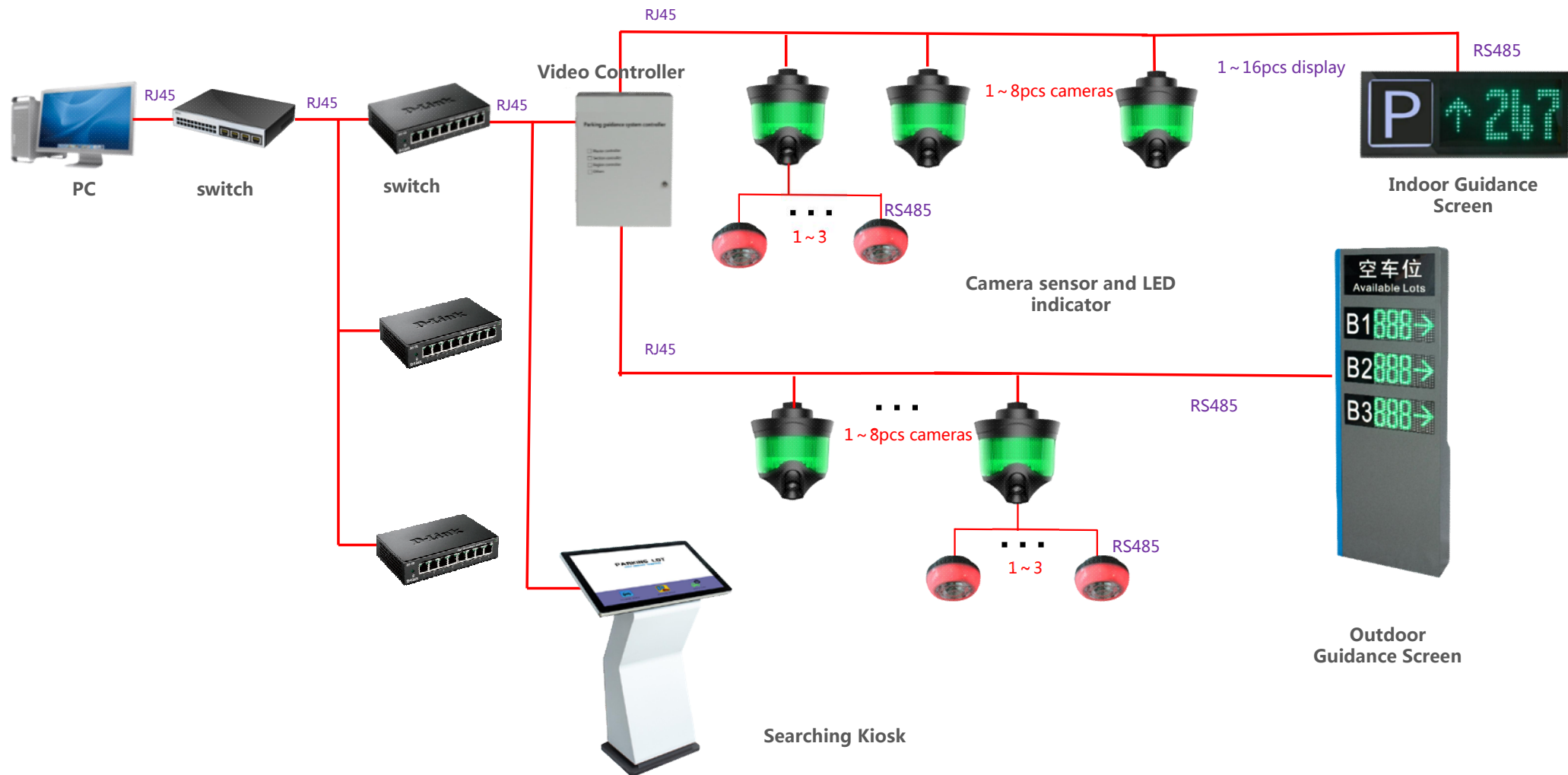


Searching Kiosk Interface



03

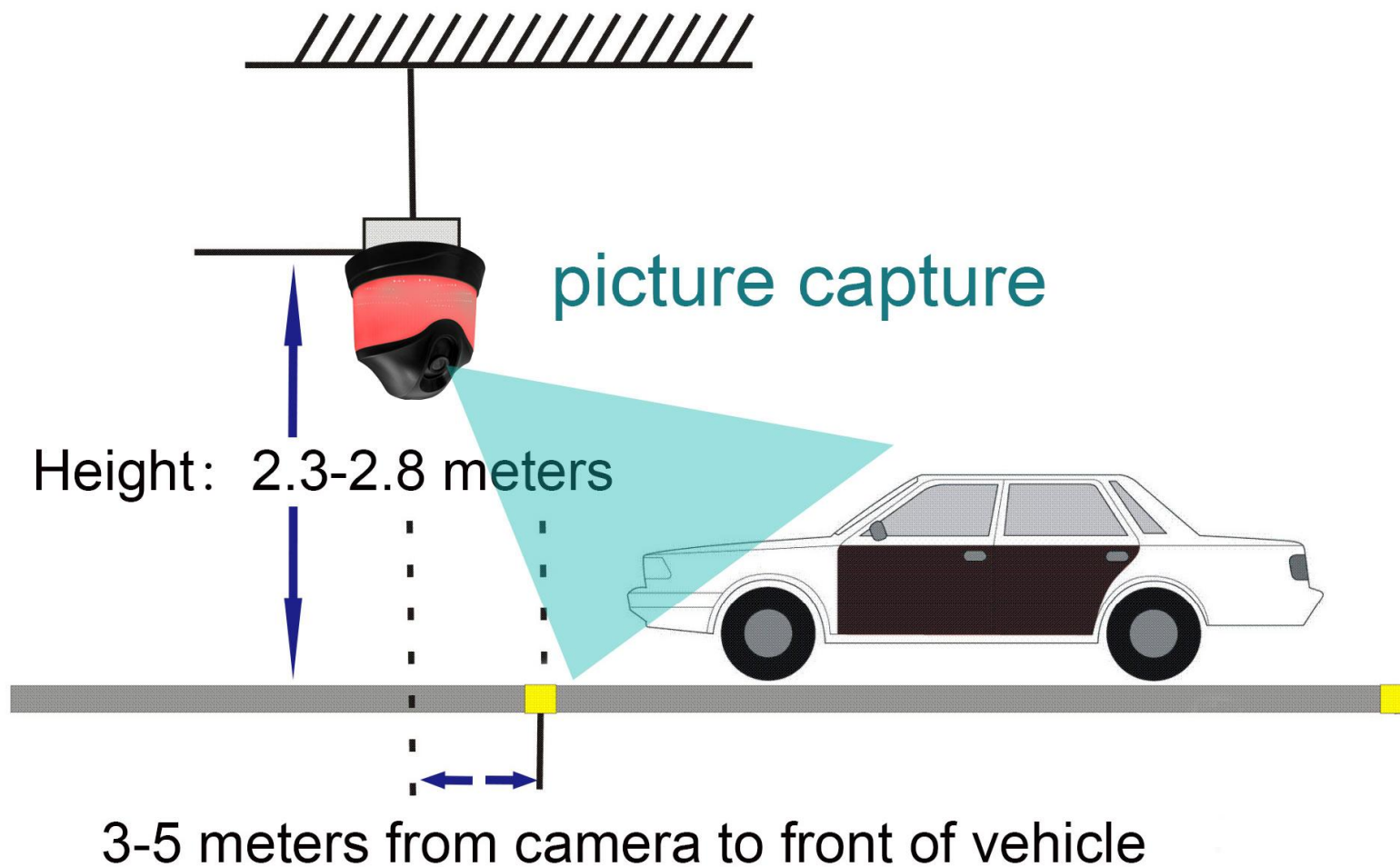
System Structure



Outdoor Parking Lot Guidance System Equipment Configuration List

100pcs parking space, use camera sensor.

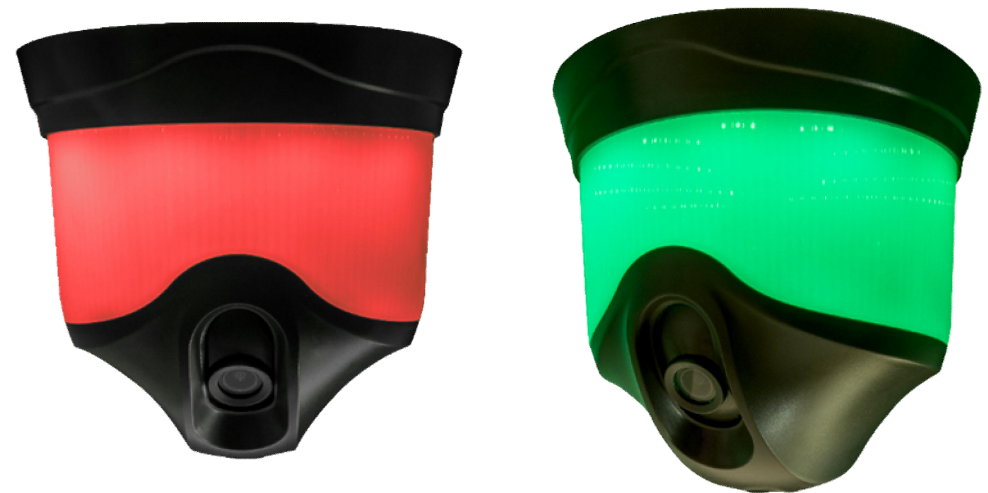
No.	The product name	Product model	quantity	note
1	Camera Sensor	PG-103CAMERA	35	1-3 parking space use 1 sensor
2	LED Indicator	PG-103 INDICATOR	65	Optional. 1 camera sensor control 1-3 LED Indicator
3	Video Controller	PG-16 VIDEO CNT	3	Control 1-16 pcs camera sensor
4	Car Searching Kiosk	KIOSK-V01	1	Quantity adjustable, find the vehicle location by license number
5	8 port Switch		2	self-provided
6	Indoor Guidance Display Screen	PG-V01 SCREEN	3	Quantity adjustable, show area available slots and show direction
7	Outdoor Guidance Display Screen	PG-V03 SCREEN OUT	1	Quantity adjustable, install at entrance of parking lot show total/area available slots
Management stations				
1	Management computer		1	self-provided



Camera sensor is designed for detecting vehicles in front of each parking space. and license plate recognition based technology employ for detection of real-time vehicle license plate number.

- ◆ 1 Sensor Detect 1-3 Parking Space
- ◆ Real Time Monitoring Parking Space Status
- ◆ TCP/IP Communication Protocol
- ◆ With RS485 Port , to Connect Guidance Screen
- ◆ Snap on Base, Easy to Install and Adjustment

Type	Parameter
Input Voltage	DC24V
Power Consumption	<5W
Interface	Ethernet TCP/IP
Type	License Plate Recognition
Application	1 to 3 Parking Space (single lens)
Resolution	H.264 , 1080P , 25FPS
Size	170*146 mm



LED Indicator PG-103 INDICATOR

1 camera sensor can connect with 1 to 3 pcs LED indicator, depend on the parking space status, the LED indicator will show green or red.

1 parking space use 1 LED Indicator.

Note: LED indicator is optional, camera sensor has built-in LED indicator.



- ◆ High light LED
- ◆ Visual distance more than 50 meters
- ◆ LED color optional
- ◆ Uplink to camera sensor

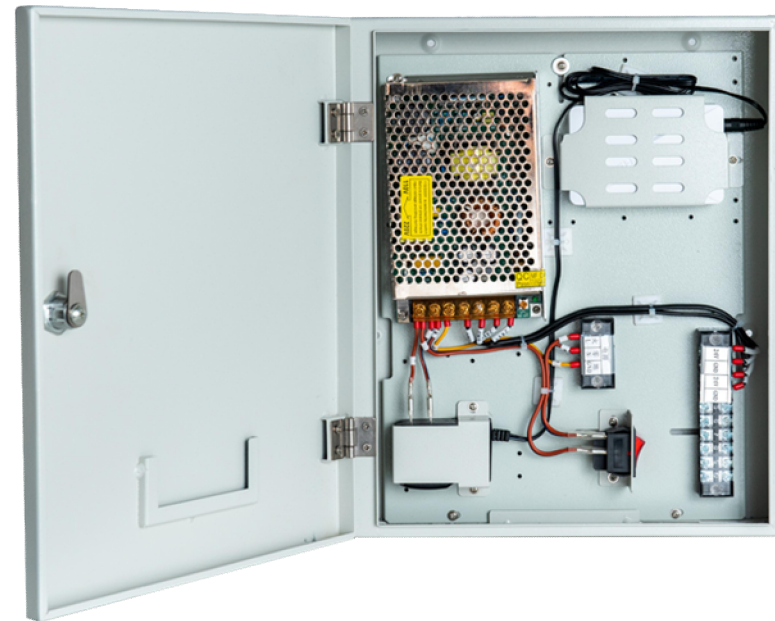
Type	Parameter
Input Voltage	DC24V
Communication	RS485
Color	Red, Green
Temperature	- 20°C - 65°C
Size	100×45 mm

Video Controller PG-16 VIDEO CNT

The video controller is the control and data transmission equipment of the video parking guidance system. TCP / IP network architecture is adopted, uplink to management server and downlink to camera sensor.

- ◆ Video Controller connect to the camera sensor

Type	Parameter
Input Voltage	AC220V±10%
Communication	TCP/IP
Application	1 ~ 16 pcs camera sensors
Size	333*275*65 mm



Indoor Guidance Display PG-V01 SCREEN

- ◆ High light LED display module
- ◆ Built-in light box
- ◆ 3 digits number and arrow show direction
- ◆ Arrow direction adjustable
- ◆ RS485 communication protocol
- ◆ Aluminum frame housing



The parking guidance display installed at intersections of main carriageways of parking lot, showing nu of vacant parking space and direction.

Type	Parameter
Input Voltage	AC220V±10% /1A
Interface	RS485
Baud rate	9600bps
LED module	P4.75、64*32 dot array when number 0 , show red color ; number as 1~9 , show yellow color ; Number above 10 , show green color.
Brightness	256 level adjustable
Temperature	- 20°C - 65°C
1 direction size	560*210*80mm

05 Entrance Guidance Display PG-V03 SCREEN OUT

- ◆ High light LED display module
- ◆ Built-in light box
- ◆ 3 digits number and arrow show direction
- ◆ Arrow direction adjustable, or set as 4 digits number
- ◆ RS485 communication protocol
- ◆ Outdoor waterproof housing

Type	Parameter
Input Voltage	AC220V±10% /1A
Output Voltage	DC12V/3A、DC5V/8A
Interface	RS485
Baud rate	9600bps
LED module	P4.75、64*32 dot array when number 0 , show red color ; number as 1 ~ 9 , show yellow color ; Number above 10 , show green color.
Brightness	256 level adjustable
Temperature	- 20°C - 65°C
Size	1600*550*150 mm

The LED guidance display install at entrance of parking lot, showing number of vacant parking space for whole parking lot or each floor.

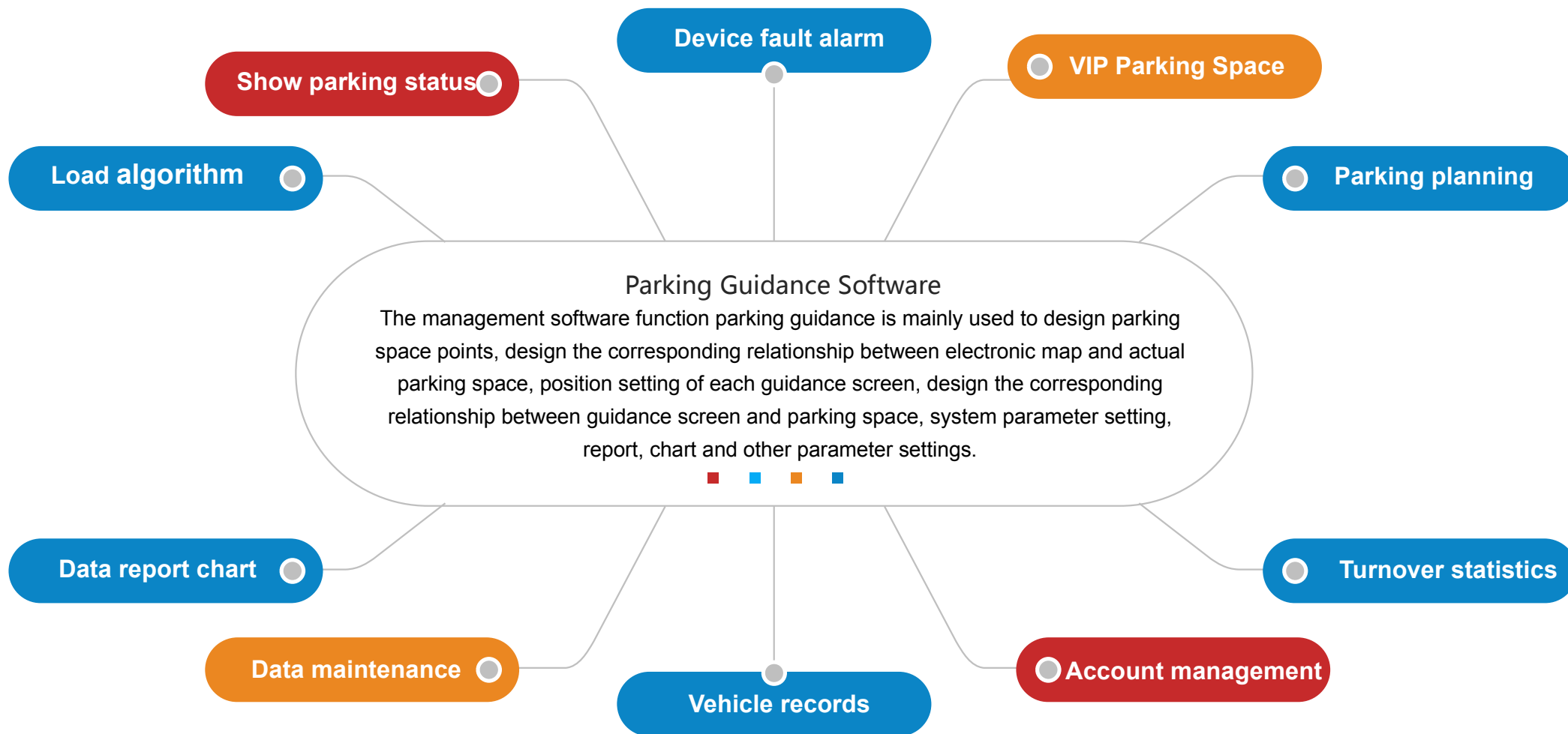


- ◆ Support English
- ◆ 21.5/ 32/ 42 inch touch screen
- ◆ Find vehicles by license plate number, parking space number and mobilization time
- ◆ Support unlicensed vehicle search and fuzzy query
- ◆ Display real-time map and plan the best vehicle search path to facilitate vehicle collection

Type	Parameter
Input Voltage	AC220V±10%
Interface	Ethernet TCP/IP
Display Screen	21.5/ 32/ 42 inch touch screen
Temperature	- 20°C - 65°C
size	530mm× 440mm× 1050mm

Install at the elevator entrance or pedestrian passage of the parking lot, which is used to query the vehicle position and give the vehicle pick-up path.





The screenshot displays a parking management software interface. At the top, a green navigation bar contains the following menu items: Settings, Parking space, Summary, Account, Maintenance, Unlock, and a Close button (represented by a circled X icon).

Below the navigation bar, a status bar provides an illustration key: ●Black Communication is unreachable, ●Blue Initial state, ●Purple Unrecognized license, ●Red Equipment failure, ●Green Recognition completed.

The main area shows a floor plan of a parking garage. On the left side of the floor plan, there are three status indicators:

- This floor parking space: 100
- Free parking space: 99
- Occupy parking space: 1

Below these indicators is a camera icon. The floor plan itself shows several parking stalls. Two specific stalls are highlighted with blue dashed boxes and labeled with green arrows and numbers: 0002 and 0001. A green dot is visible in the stall labeled 0001.

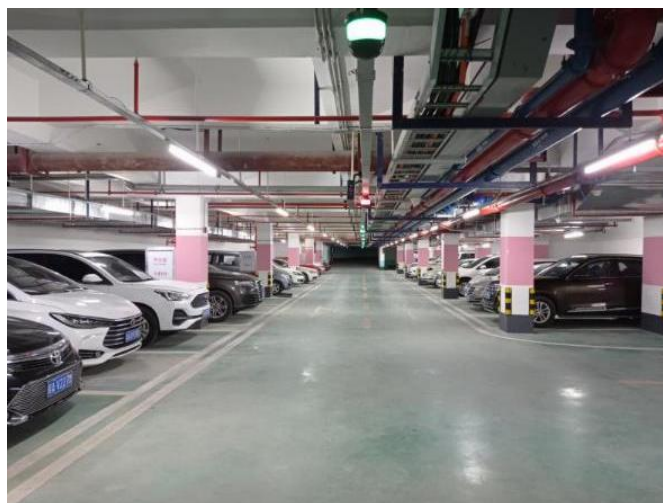
At the bottom left, there is a table for parking information:

Parking info...	Parameter value
Parking name	
License Plate	
IP address	
Affiliated line	
in line address	
Total address	
Update time	

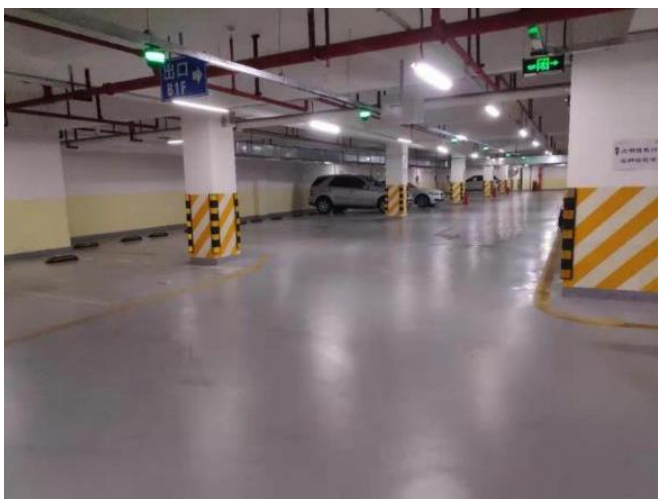
Beijing AEON Supermarket



Nanning FY Building



Shenzhen WS Building





Thanks for Watching



All rights reserved by shenzhen sintronic technology company limited